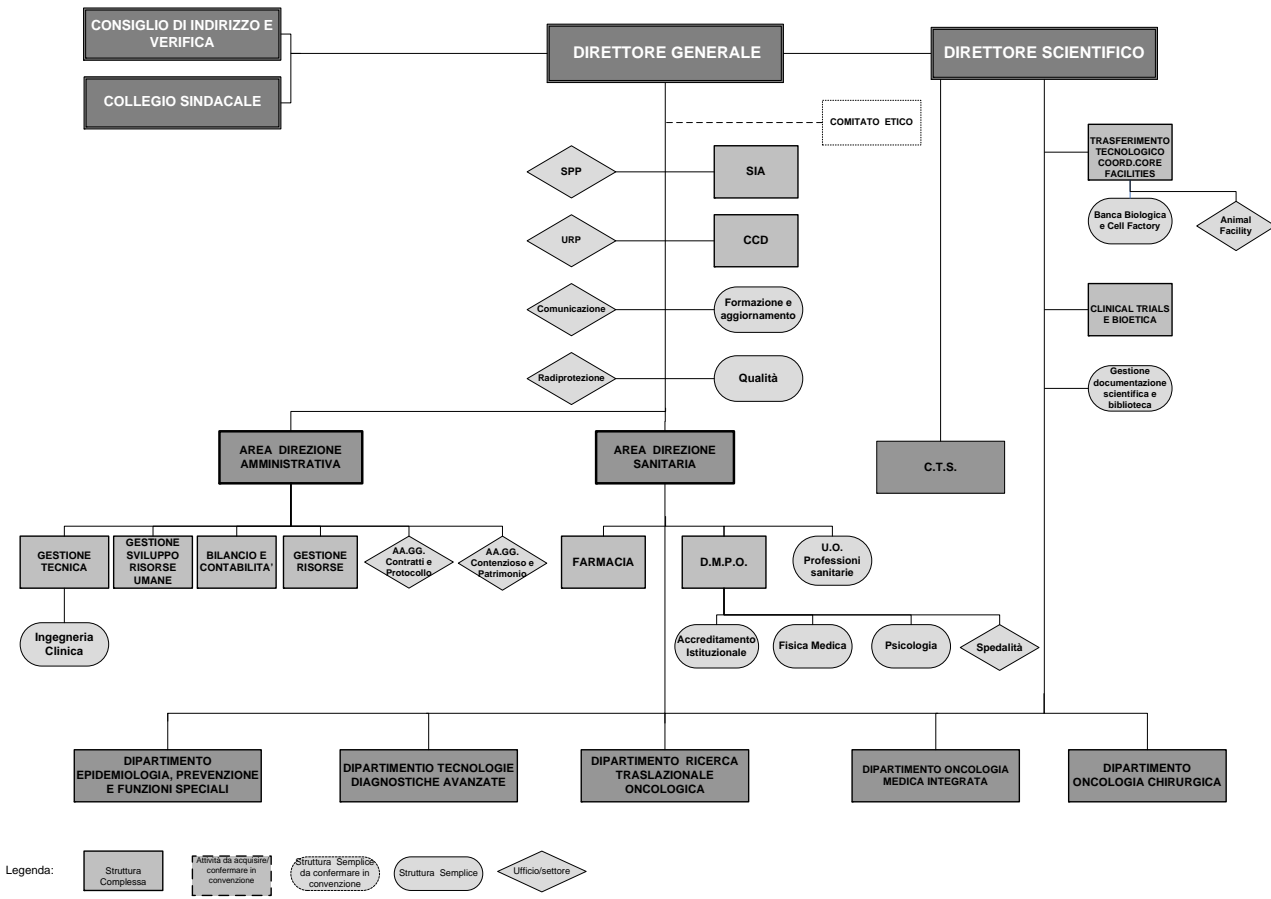
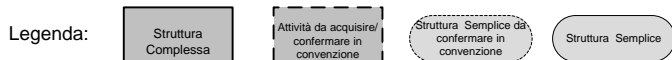
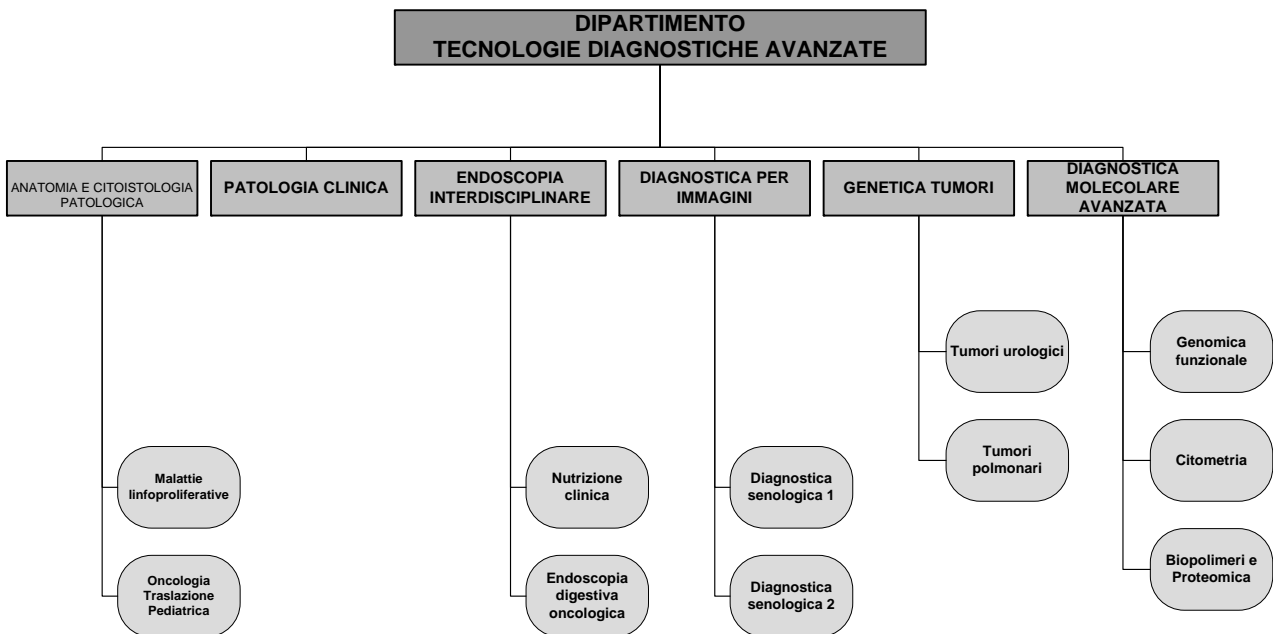
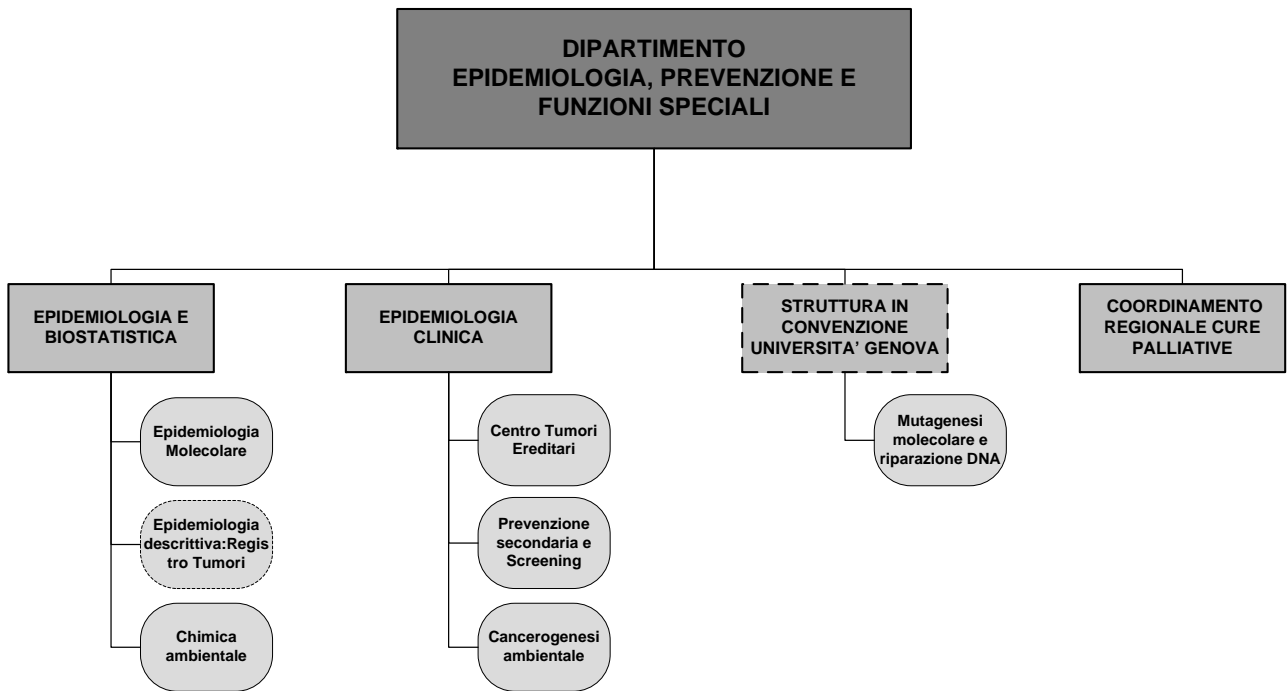
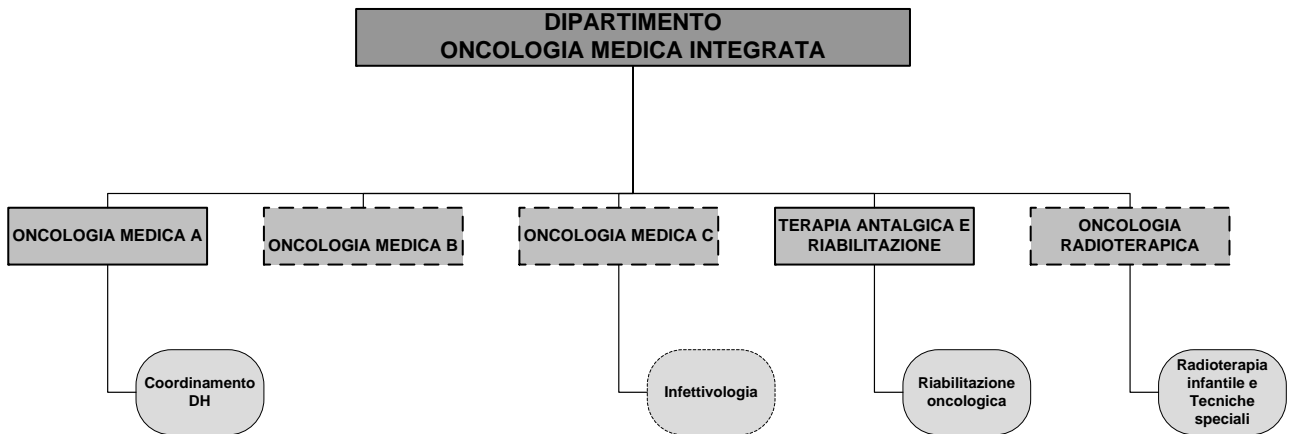
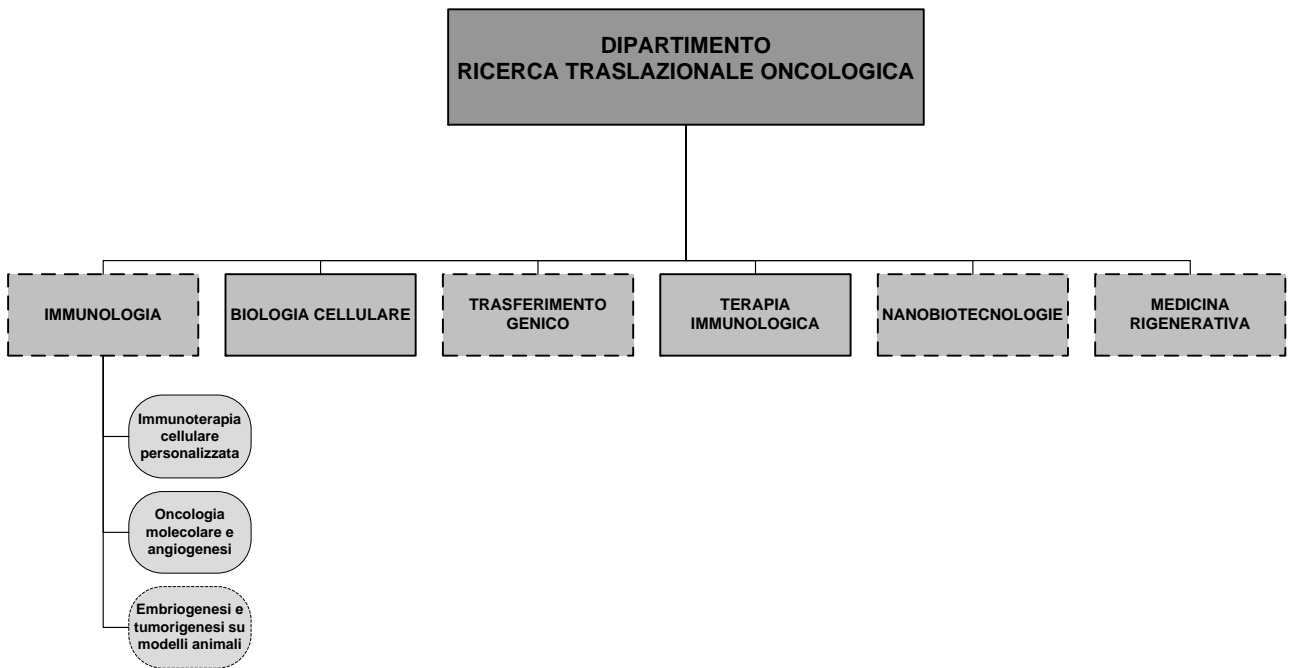


STRUTTURA ORGANIZZATIVA

di cui a delibera n. 129 dell' 11/02/2008







Legenda:

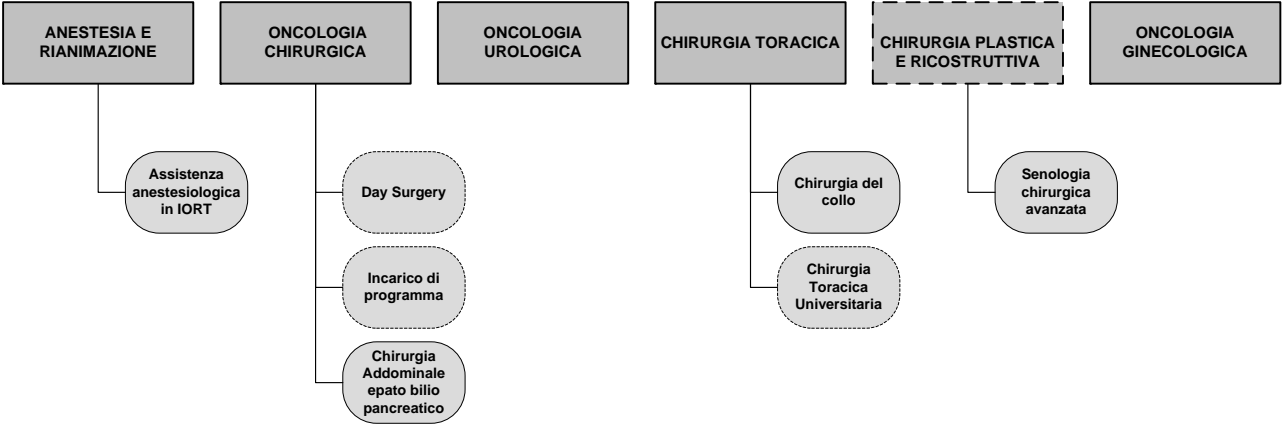
Struttura Complessa

Attività da acquisire/
confermare in
convenzione

Struttura Semplice da
confermare in
convenzione

Struttura Semplice

**DIPARTIMENTO
ONCOLOGIA CHIRURGICA**



Legenda:

